



STRATUS OCT

The Zeiss Stratus Optical Coherence Tomography unit is a diagnostic imaging device that provides direct cross sectional images of the retina for objective and subjective clinical evaluation in the detection of glaucoma and retinal diseases:

The STRATUS OCT images and analyses macular thickness, the retinal nerve fibre layer and the optic disc using the latest technology for high resolution scans. It is also the only instrument to offer three diagnostic capabilities:

- Macula
- Retinal Nerve Fibre Layer
- Optic Nerve Head

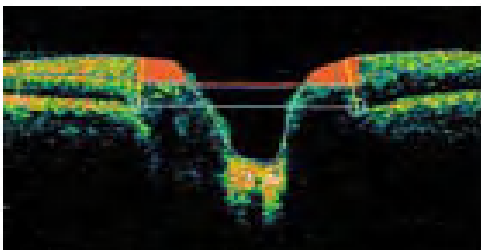
The dynamic information provided by the STRATUSOCT produces retinal images never seen before. Since installing this unit our diagnostic capabilities have increased markedly and our ability to monitor disease progression via a quantitative approach has never been more accurate.

STRATUS OCT is a tomographic imaging device providing the complete cross-sectional view of the retinal structure in a way which demonstrates actual histology.

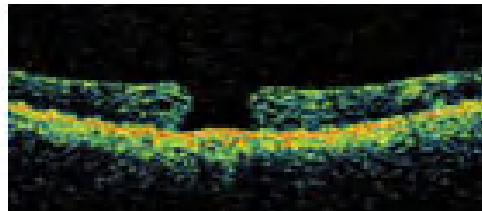
The result is data that enhances one's ability to diagnose and manage glaucoma or retinal disease.

Patient's with a family history of Glaucoma, Age Related Macular Degeneration (AMD), Hypertension and/or Diabetes should be routinely screened on the STRATUS OCT at least once every two years.

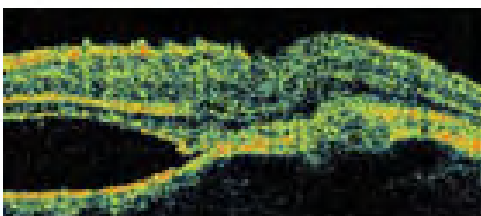
Please contact our Burwood office on (02) 9747 2518 for further information about the STRATUS OCT Eye scan.



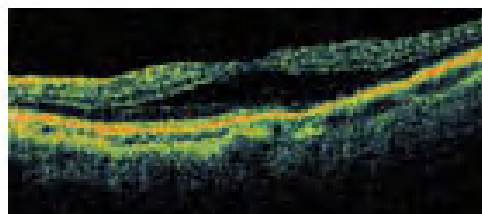
Optic Nerve Head



Macular Hole



Cystoid Macular Edema



Central Serous Retinopathy